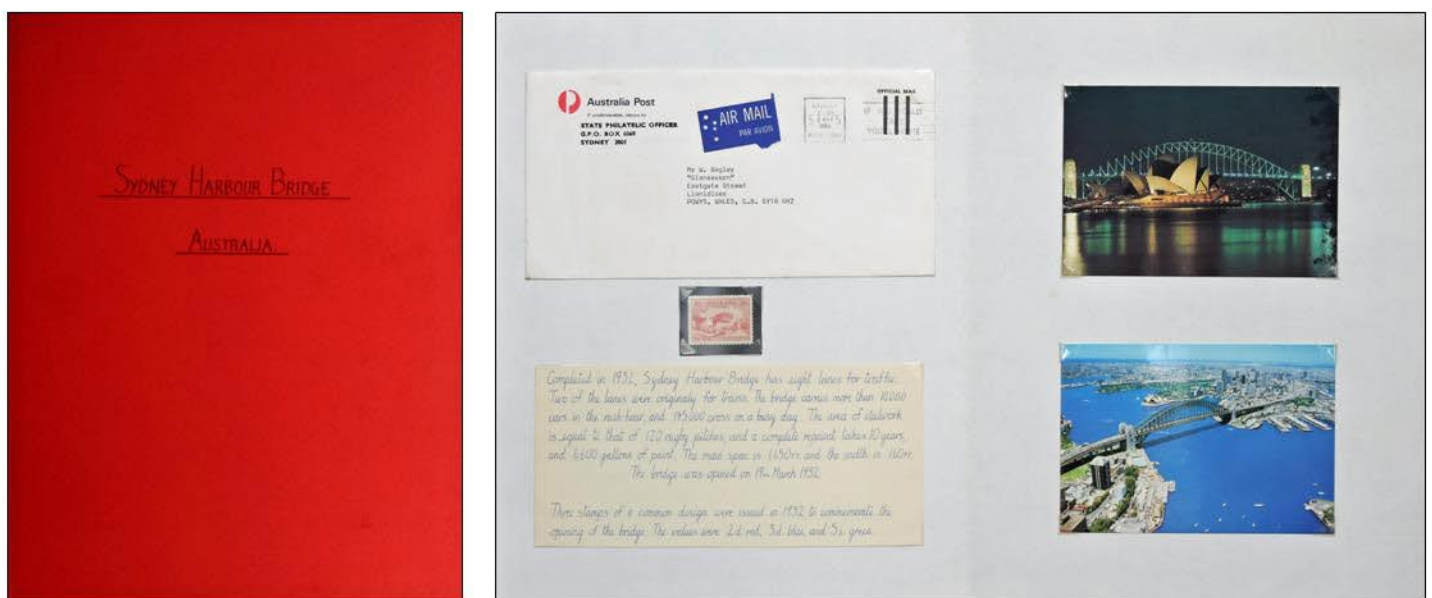


# BRIDGE STAMPS

I was impressed by the architecture of bridges as depicted on stamps. I could simply have mounted stamps with just the country of origin and basic details of issue. Instead, I corresponded with postmasters, and other officials, to obtain postcard pictures and postmarks associated with the particular bridge stamp. What follows is a record of some of my attempts, with each stamp mounted in a card folder together with stamp information, a postcard of the bridge, a postmark where possible, or FDC, and other related items loosely placed in the folder.

This is an illustration of how the stamps and associated material are mounted in a hard card folder.



In the following pages a thumb nail of the folder is shown, and then items from the folder and incidental materials are shown individually for clarity.